



Understand the Earth to preserve it

TAHATAI Neo





TAHATAI Neo Kick-Off meeting

Frédéric Bretar, head of SCO at CNES

Célie Losada, SCO / CNES Project Manager

Rémi Andreoli, BLUECHAM, Project manager TAHATAI Neo

Pascal Correia, Gouvernement de la Polynésie Française, DRM, co-leader TAHATAI Neo



TAHATAI Neo

Balance economic development with environmental preservation, ensuring the well-being of population

Threats

Climate Change Impacts

- Sea level rise
- Ecosystem collapse
- Coastline erosion
- Aquaculture

Human impact

- Usages and conflicts of use on the littoral
- Maritime frequentation



TAHATAI Neo

Objectives

Improve coastal governance to address climate change

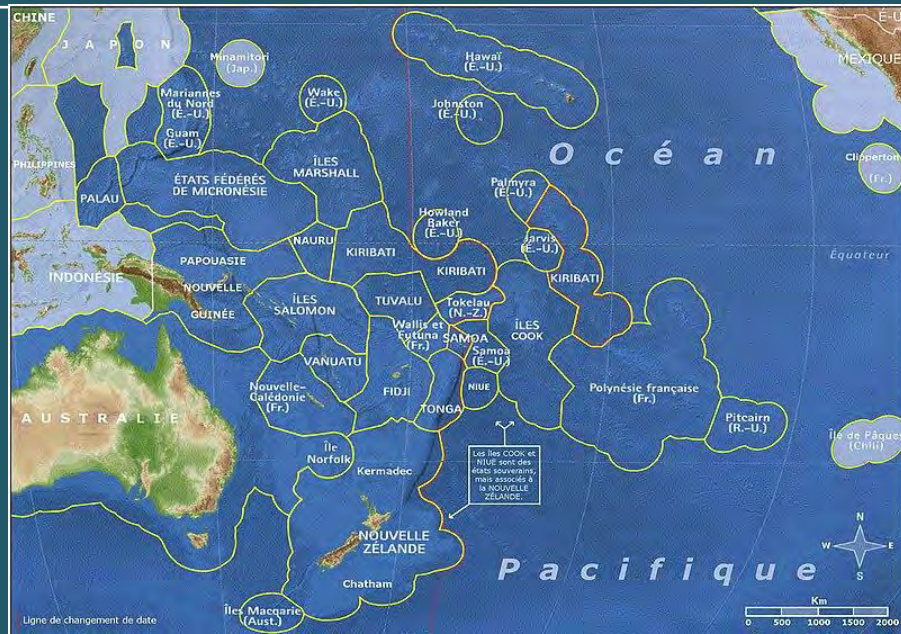
Improve QVX Smart Digital Platforms with innovative demand-driven methods and mobile Apps

Scale-up of solutions to South Pacific countries

Deploy/activate QVX Smart Digital Platforms

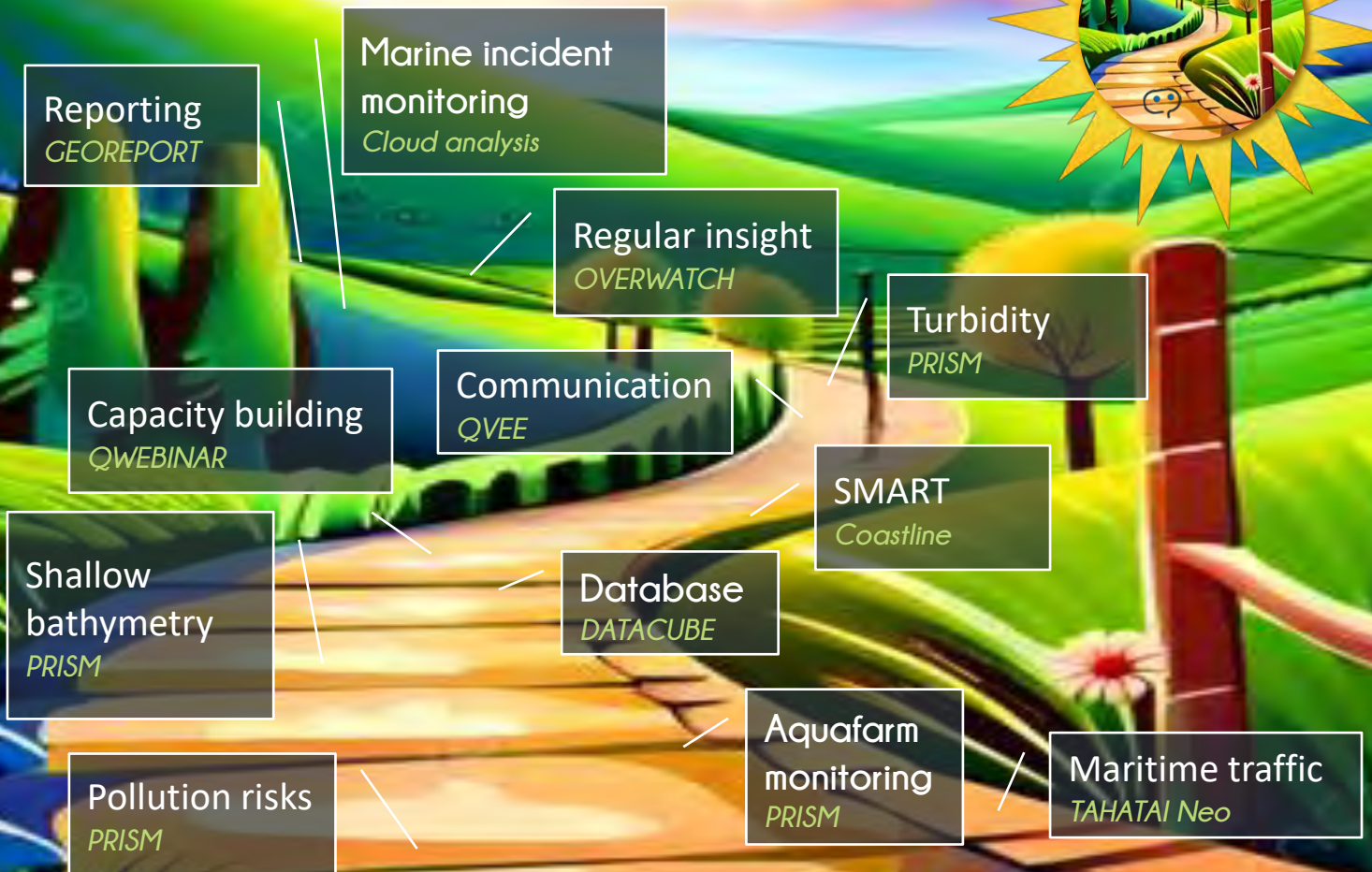
Marketing

The aim is for the whole Pacific zone to benefit from the TAHATAI Neo's results



QVX Smart Digital Platforms

The new
generation of GEO
decision-support
systems



Solution-focused
People at the heart of the system
Knowledge integrator

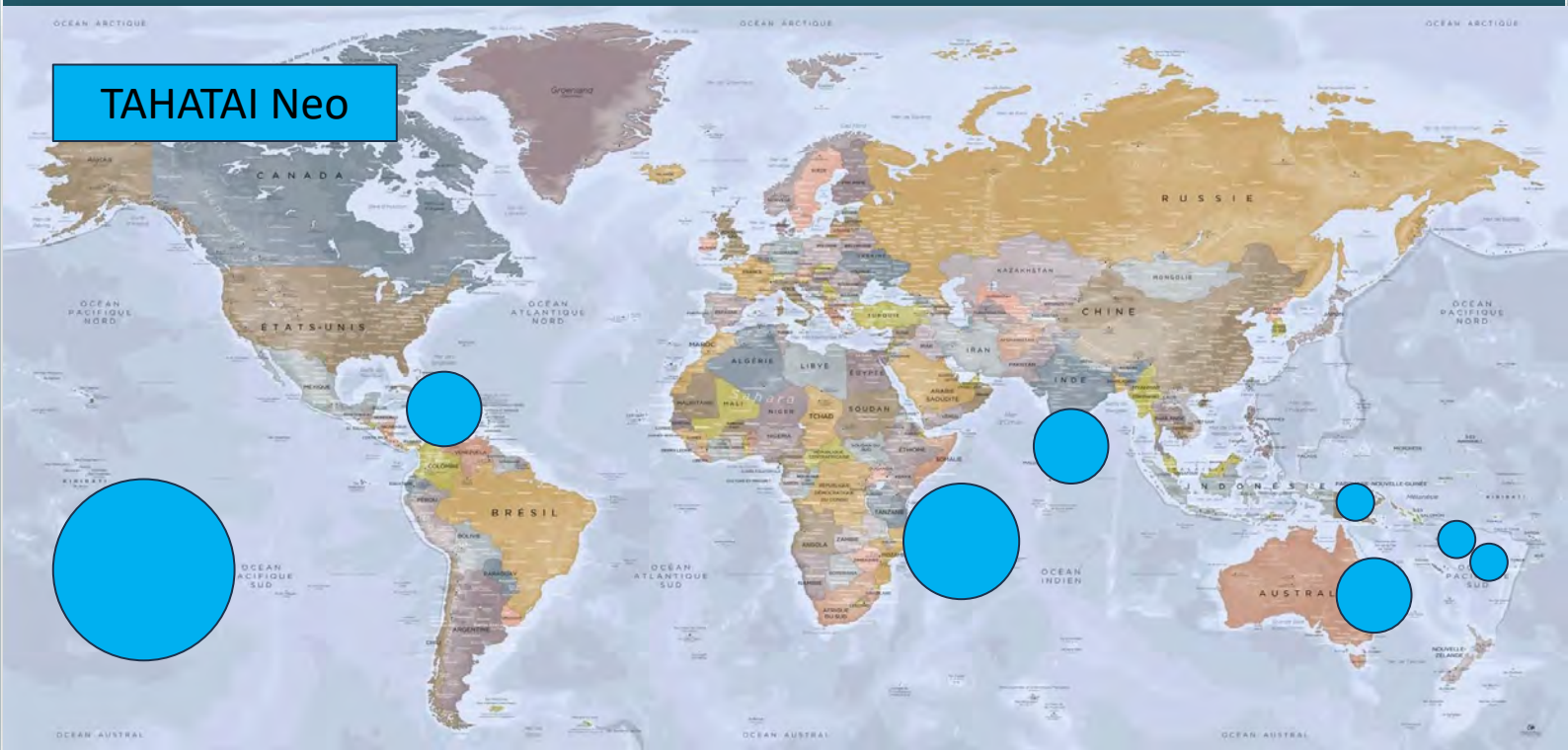


Build your own solutions

QVX Smart Digital Platforms

Indo-Pacific axis

Polynésie Française, Vanuatu, Fiji, Papua new Guinea, Australia



Indian Ocean area, Antilles-Guyane, India



Build your own solutions





TAHATAI project

- Public policy support
- TAHATAI Neo objectives
- Key Performance Indicators



K.P.I.

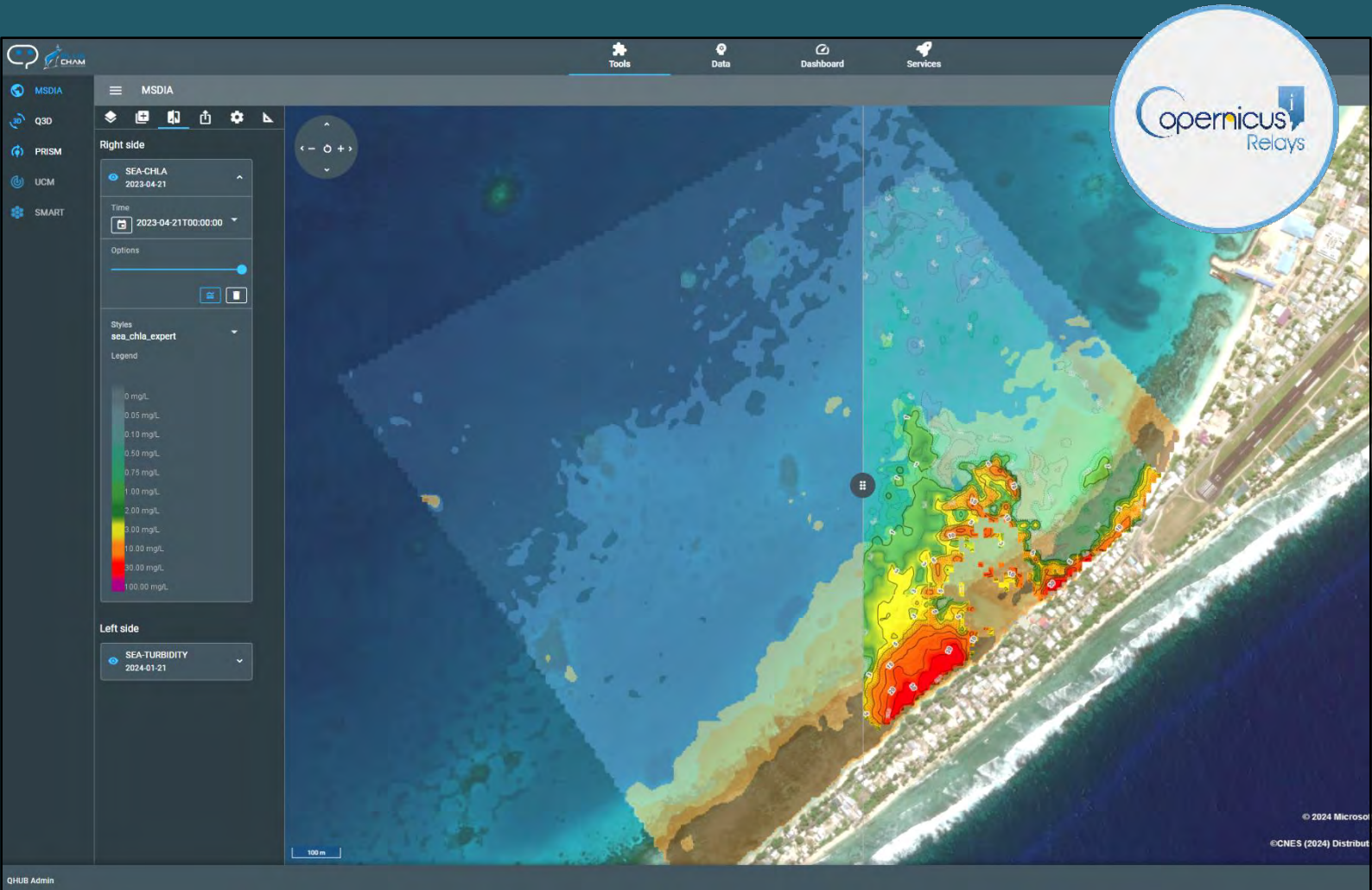
- ✓ • Modelling (E.O., A.I.)
- ✓ • Automation at scale (Cloud)
- ✓ • Interface (UX/UI)
- ✓ • Marketing



MSDIA

Massive Satellite
Data Instant Access

Real time
daily access
& DATACUBE



- Algorithm
- Automation
- Interface
- Marketing

SATELLITE DATA

- Copernicus
- DIAS
- DATACUBE
- GIS Interoperability

COASTLINE

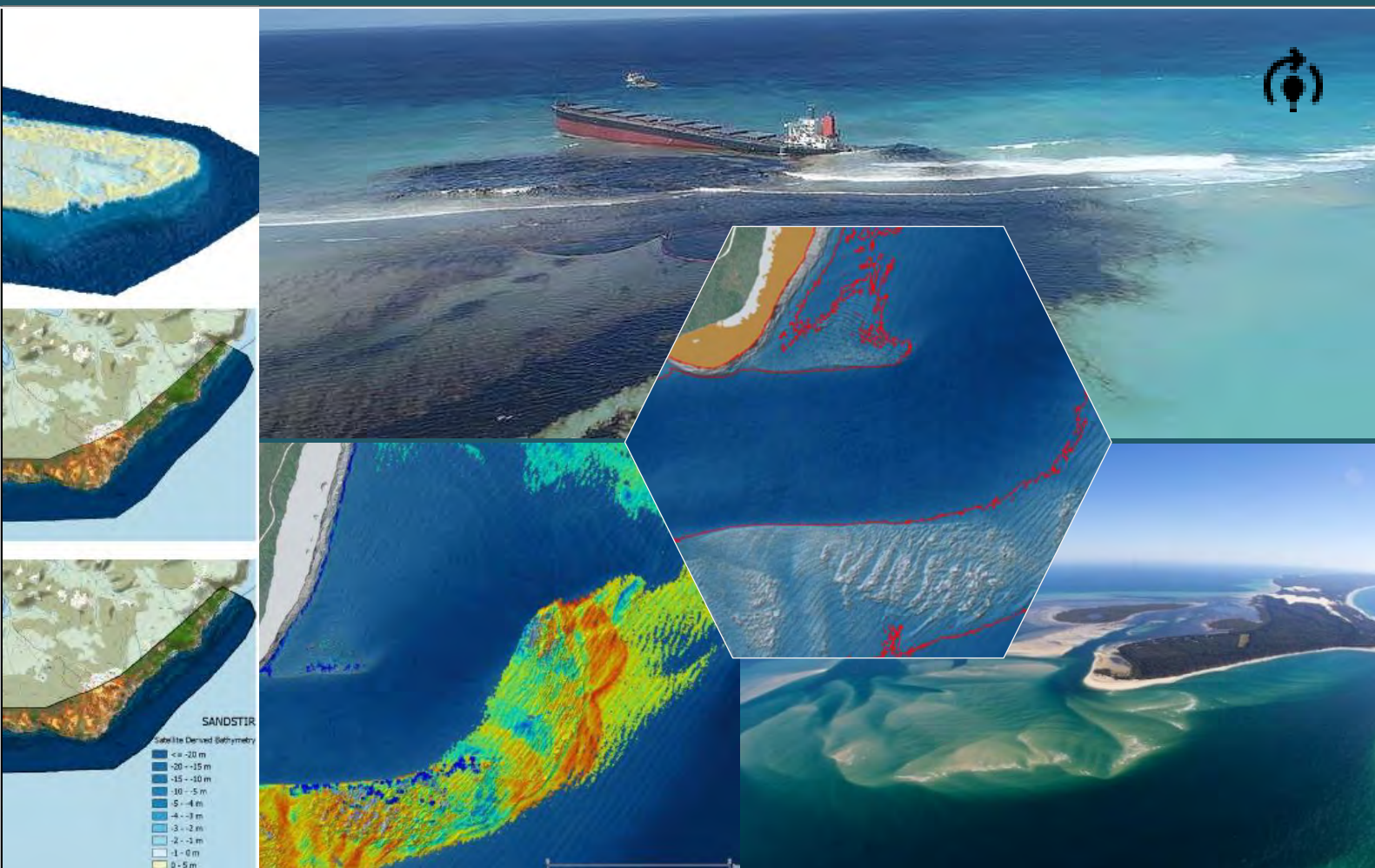
COASTLINE delineates the high water mark, the low water mark and the observed sea variations within the intertidal zone



- Modelling
- Automation
- Interface
- Marketing

SWBATHY

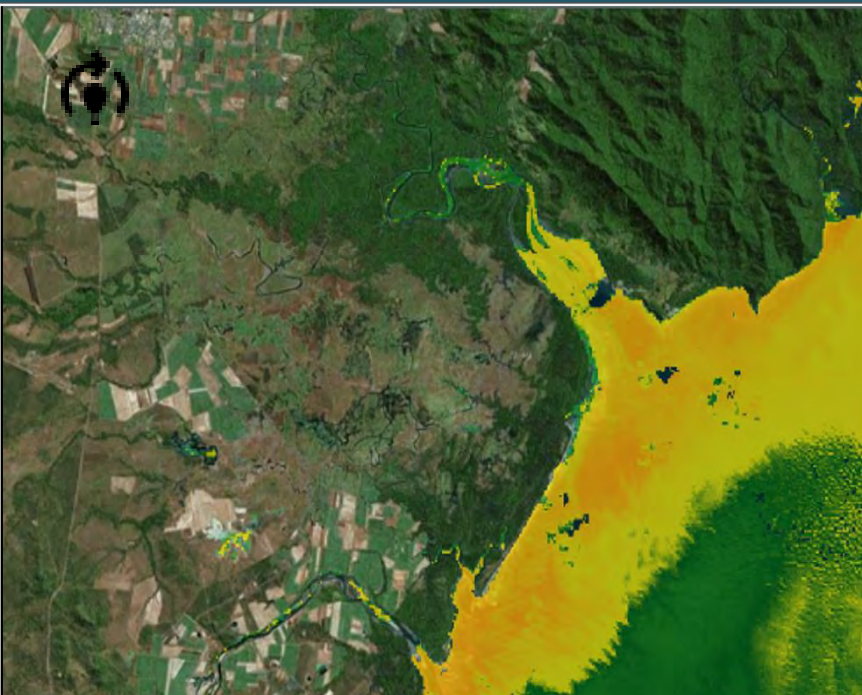
Up-to-date
bathymetry of
shallow waters
from 0 to 20m



- Modelling
- Automation
- Interface
- Marketing

SEA-CHLA

Blooms alert and
water quality

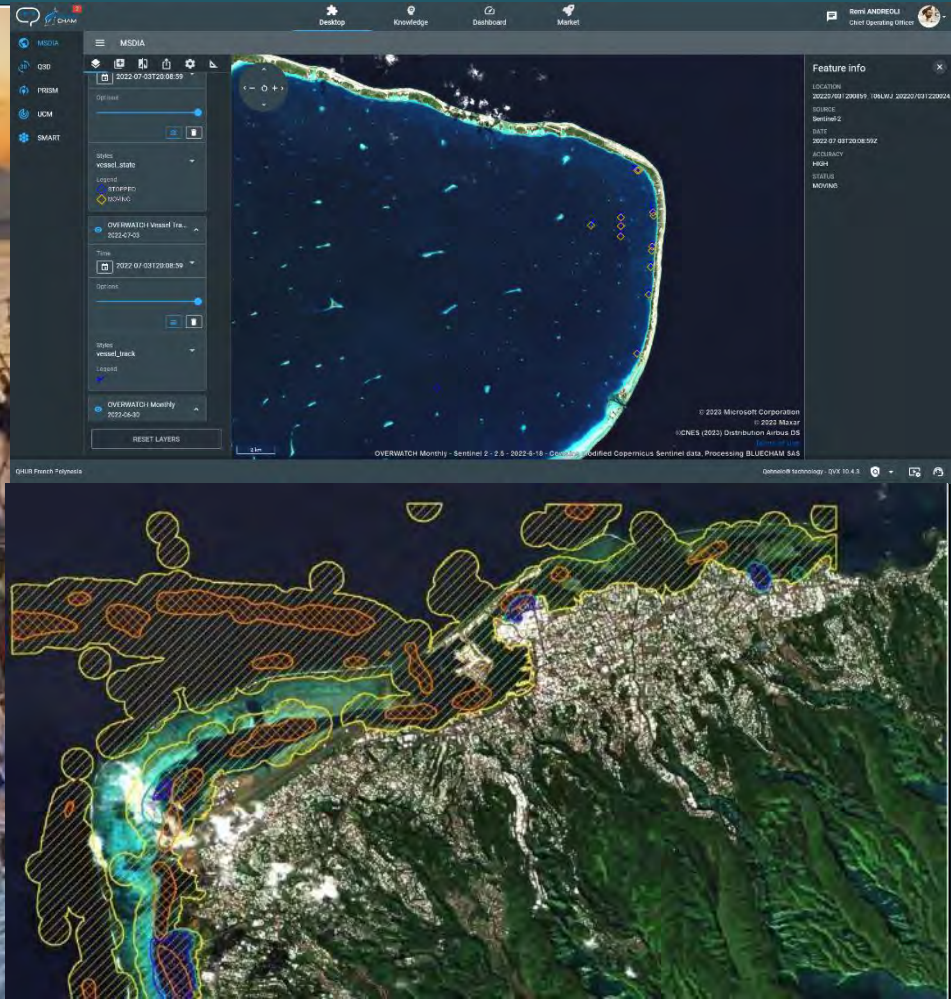


- Modelling
- Automation
- Interface
- Marketing


Harmful algal blooms occur when algae colonies grow uncontrollably and have potential toxic effects on humans, fish, or aquaculture farms. This phenomenon is amplified by climate change and has become a societal issue.

BOATINFO





Maritime
frequentation

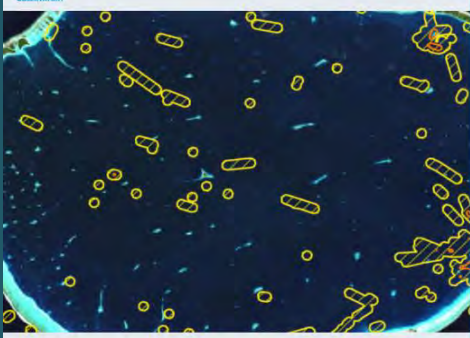


- Modelling
- Automation
- Interface
- Marketing




TAHATAI

-  Alert
-  Manage
-  Plan
-  Protect



ANTHROPOGENIC PRESSURE
HUMAN ACTIVITY IN LAGOON ENVIRONMENT

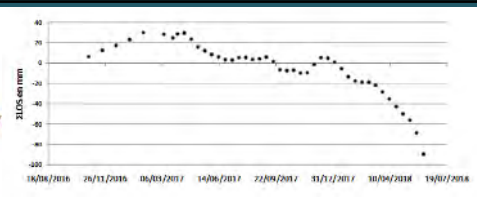
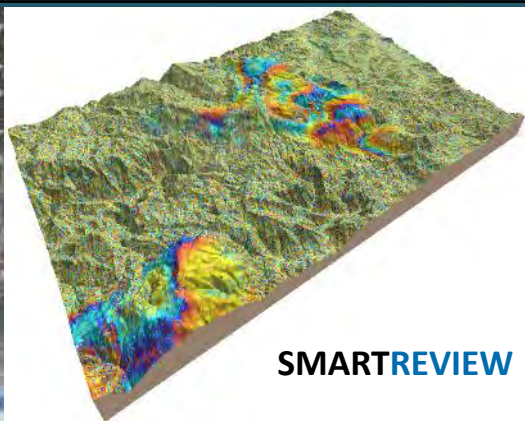
Accurately identify the types of activities carried on in the lagoon such as maritime traffic or coastal fishing enables to better manage their repercussions





SMART

Coastal subsidence



SMARTMONITOR

SMARTREVIEW

- Modelling (SMART)
- Automation
- Interface (SMART)
- Marketing



TAHATAI Neo

Capacity building

WEBINAR

Improve your skill with
on-line experts

QWEBINAR DISCOVERY

Be fluent with your QVX SMART Digital platform

QWEBINAR ADVANCED

Become an advanced user of a high-value-added application

QWEBINAR PRO

Concerns a specific business or thematic use

QWEBINAR QVX

QVX

Free session

DISCOVERY - Getting Started with QVX

QWEBINAR

A QWEBINAR is an online Qehnelo® technology training.

It addresses one objective in one hour.

Minimum 3 people, maximum 12.

QVX DISCOVERY

- Be fluent with the QHUB
- Identify your profile and your WG
- Use QPORTAL (MSDIA introduction) & QVEE Apps
- Navigate through the different WS
- Learn the vocabulary
- Understand the economic model and how to use QMARKET

How it works?

You need a Qehnelo® account.

You need to be registered.

You don't need any technical skill.

You are informed of the session via QVEE QWEBINAR specific channel.

You click on the QWEBINAR link and you participate.

<https://linkedin.com/showcase/qehnelo>

© 2023 BLUEHAM. All rights reserved.



	Année 1	Année 2
WP 1	Déploiement de la Place de Marché Marketing en Polynésie	Marketing international
WP 2	Automatisation de l'analyse des usages Tableau de bord	Mise à l'échelle internationale
WP 3	Automatisation des suivis par stations virtuelles	Intégration à la Plateforme Digitale QVX
WP 4	Développement concerté des usages mobiles	Déploiement des applications mobiles





Understand the Earth to preserve it

TAHATAI Neo

